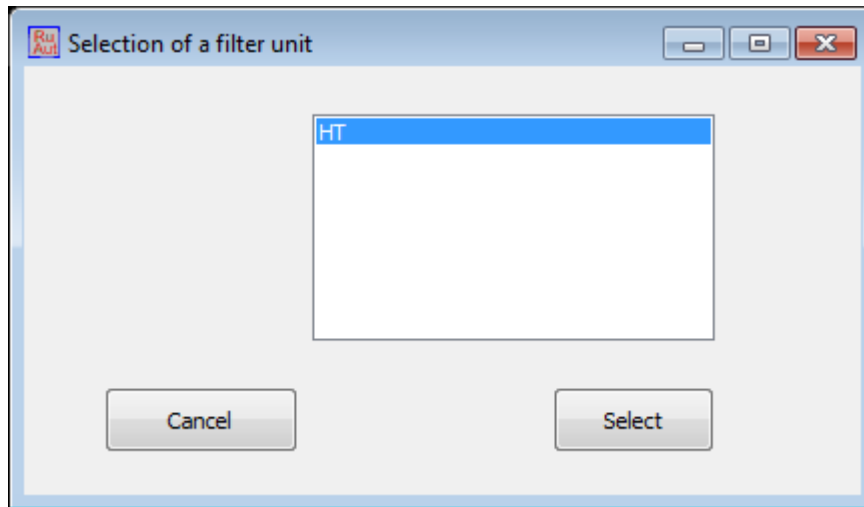
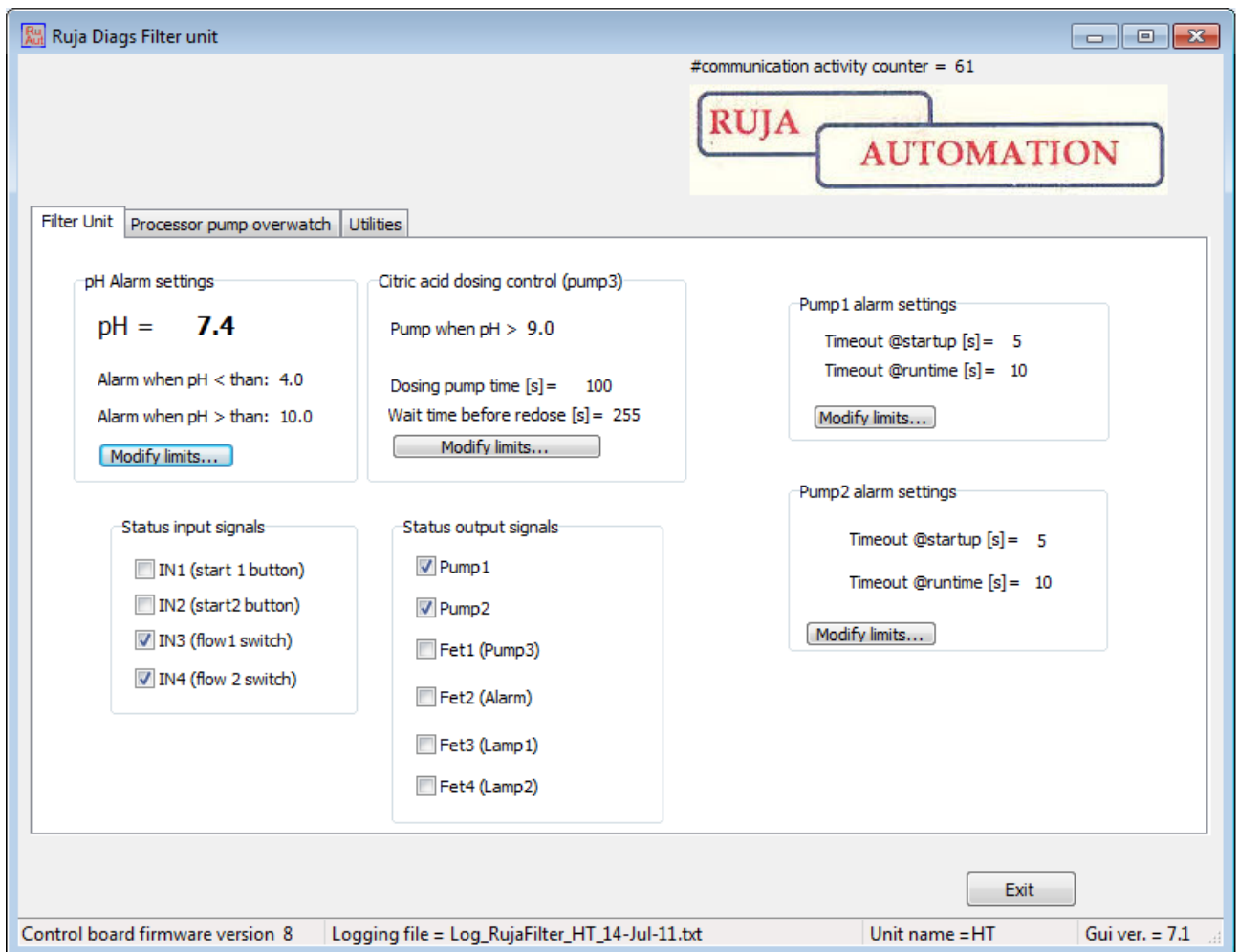


## User Manual Software for USB communication with Filter-Unit

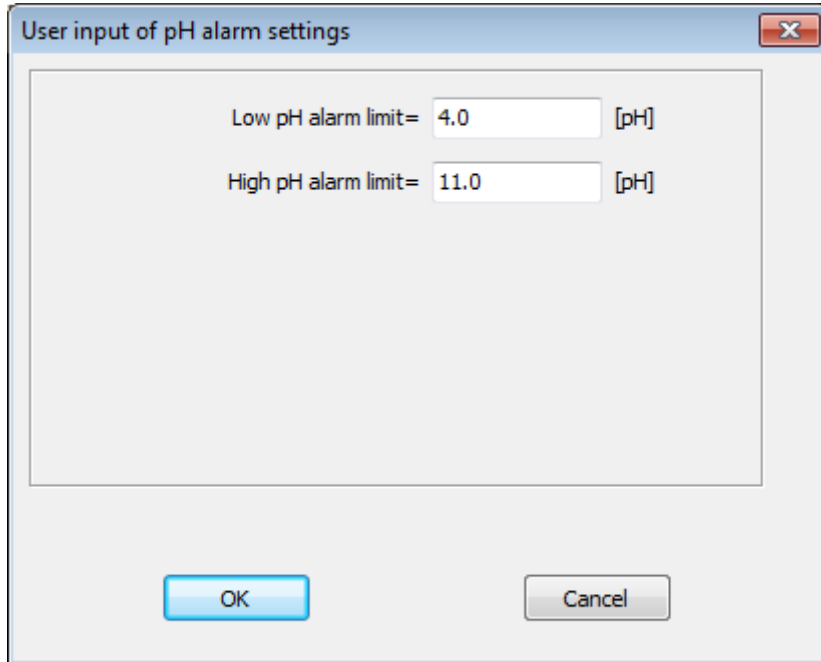
1- Select the correct filter Unit number



2- Main screen with all variables:

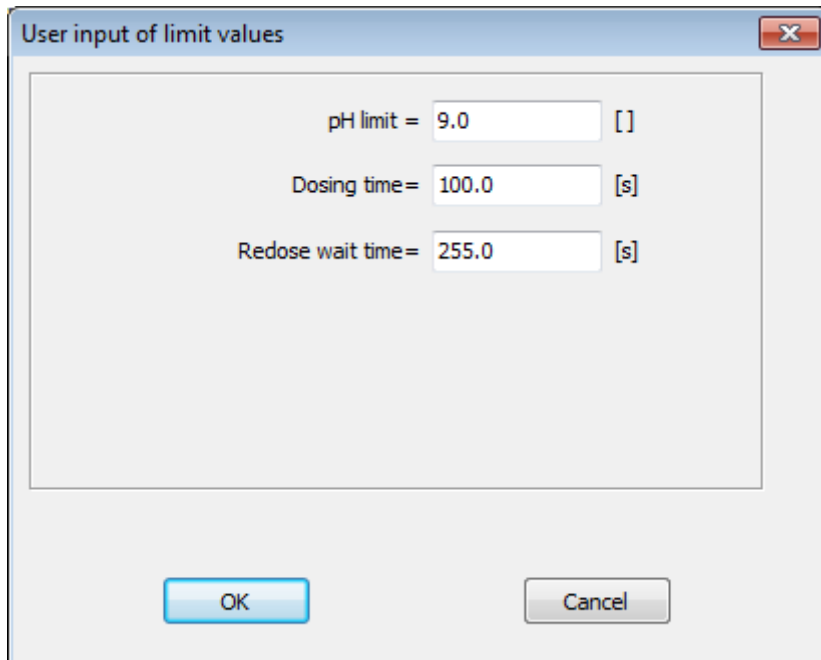


3- Defining upper and lower limits of pH value alarm:



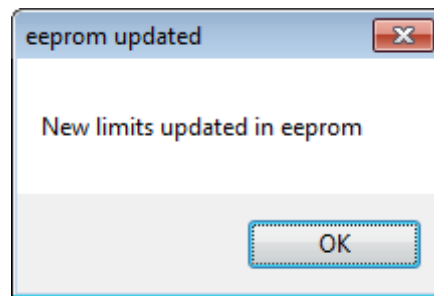
A dialog box titled "User input of pH alarm settings" with a close button (X) in the top right corner. It contains two input fields: "Low pH alarm limit=" with the value "4.0" and unit "[pH]", and "High pH alarm limit=" with the value "11.0" and unit "[pH]". At the bottom, there are two buttons: "OK" (highlighted in blue) and "Cancel".

4. Trigger pH value for replenishing with Citric Acid:



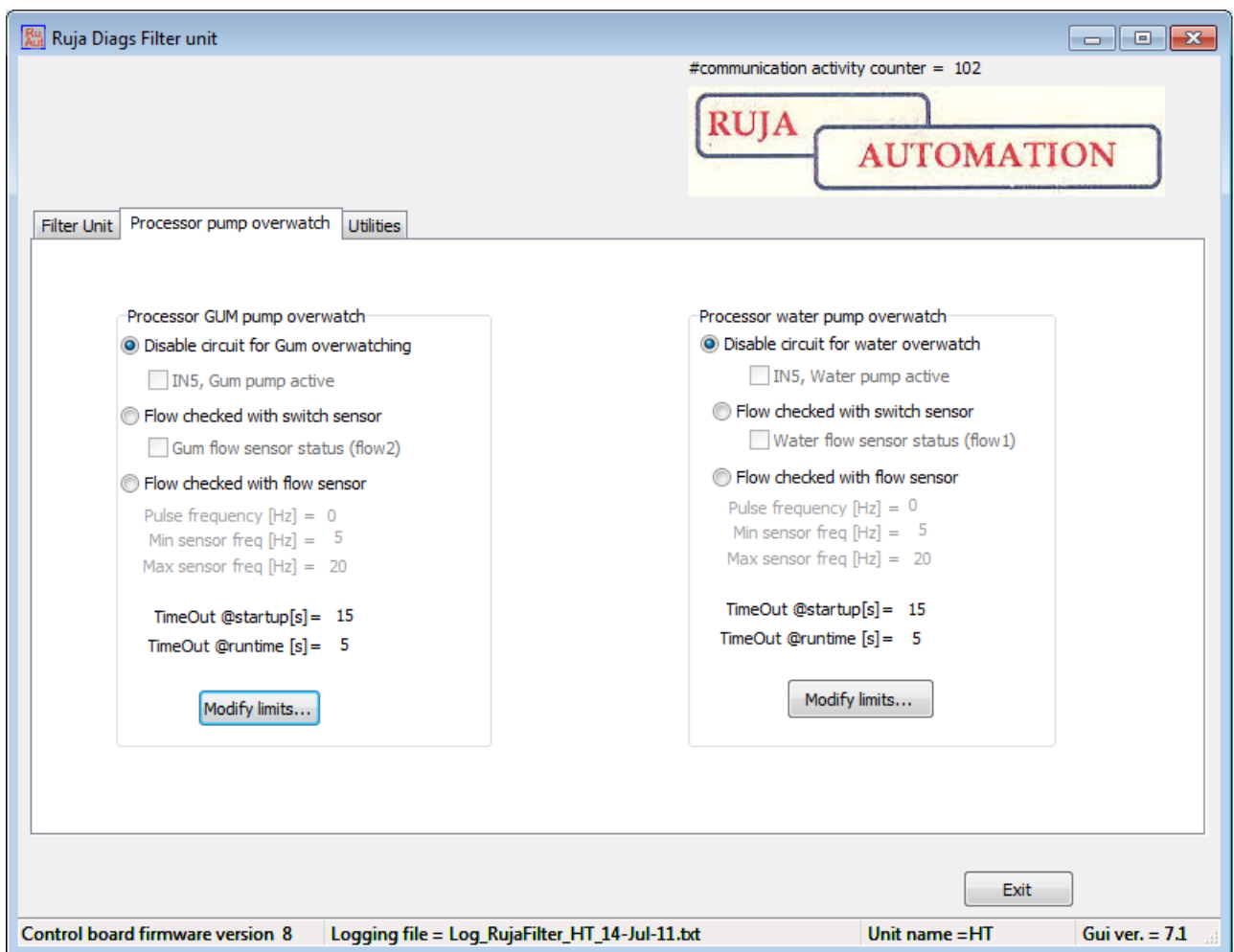
A dialog box titled "User input of limit values" with a close button (X) in the top right corner. It contains three input fields: "pH limit =" with the value "9.0" and unit "[ ]", "Dosing time =" with the value "100.0" and unit "[s]", and "Redose wait time =" with the value "255.0" and unit "[s]". At the bottom, there are two buttons: "OK" (highlighted in blue) and "Cancel".

## 5. Saving updated parameters in E2prom:



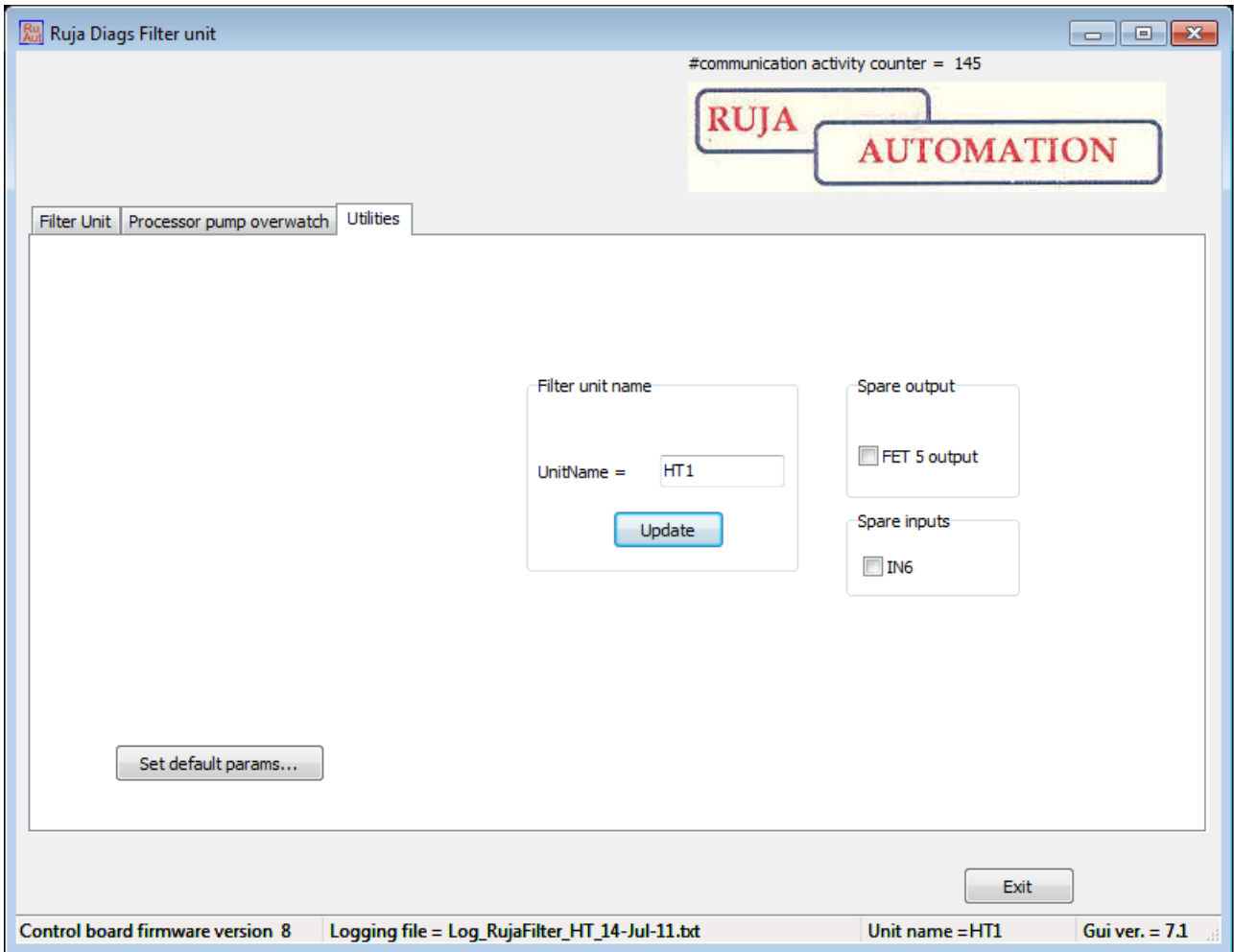
## 6. Activating Gum pump or Water pump flow alarm:

This flow alarm is an option and is not build-in standard. One or two flow meters must be installed first and electrically connected to the filter unit. If this option is not installed be sure to disable the over watch.



## 7. Changing the identification name of the filter unit:

Note, max 5 characters are allowed.



## 8. Importing the saved parameters values \*.TXT in to Excel makes it possible to create graphs for statistics:

Log\_RujaFilter\_HT\_14-Jul-11.txt - Notepad

#	Time	pH	pump1	pump2	dose	pump alarm	gum pump	gum flow	water pump	water flow
0	14-Jul-11 8:26:39 AM	Ruja filter monitor started								
0	8:27:01 AM	7.9	1	1	0	0	0	0	0	0
1	8:27:24 AM	8.0	1	1	0	0	disabled	0	0	0
2	8:27:47 AM	8.0	1	1	0	0	disabled	0	0	disabled
3	8:28:09 AM	8.0	1	1	0	0	0	0	0	0
4	8:28:32 AM	7.9	1	1	0	0	0	0	0	0
5	8:28:55 AM	8.0	1	1	0	0	0	0	0	0
6	8:29:17 AM	8.0	1	1	0	0	0	0	0	0
7	8:29:40 AM	7.9	1	1	0	0	0	0	0	0
8	8:30:03 AM	7.9	1	1	0	0	0	0	0	0
9	8:30:30 AM	8.0	1	1	0	0	0	0	0	0
10	8:30:53 AM	8.0	1	1	0	0	disabled	0	0	disabled
11	8:31:15 AM	8.0	1	1	0	0	disabled	0	0	disabled
12	8:31:38 AM	8.0	1	1	0	0	disabled	0	0	disabled
13	8:32:01 AM	8.0	1	1	0	0	disabled	0	0	disabled
14	8:32:23 AM	8.0	1	1	0	0	disabled	0	0	disabled
15	8:32:46 AM	8.0	1	1	0	0	disabled	0	0	disabled
16	8:33:08 AM	7.9	1	1	0	0	disabled	0	0	disabled