

# User manual

## S - VCF - PP - Filter - Unit



1. Technical specifications

2. Safety instructions

3. User section

4. Spare parts list

5. Ordering info

# 1. Technical specifications

DIMENSIONS		
<b>Width</b>		400 mm
<b>Height</b>		1100 mm
<b>Depth</b>		350mm
MECHANICAL SPECIFICATIONS		
<b>Temperatures</b>		
Developer	Min. - Max.	20 - 50 °C
Aktivator	Min. - Max.	20 - 50 °C
Water	Min. - Max.	20 - 50 °C
<b>Tank volumes</b> (excl. Hoses to processor) Filter Unit		11 l
ELECTRICAL SPECIFICATIONS		
<b>Power Supply</b> EUR-models		2W + PE, 230V / 2x2,5 Amps, 50-60 Hz
<b>Voltage tolerances</b>		± 10%
<b>Power consumption</b> EUR models      Max		200 Watts

APPROVALS	
CE regulations	
The S-PP-Filter-Unit complies with:	▪ Machine Directive 98/37/EG

WEIGHTS	
<b>Filter Unit including Filter Bag</b>	
▪ Shipping	60 kg
▪ Empty	40 kg
▪ With liquid	approx. 53 kg

## 2. Safety instructions

This chapter lists general safety prescriptions to be taken into account before you start operating the filter unit or perform maintenance and troubleshooting.



Handling instructions concerning chemicals:

- Do not drain chemicals into public sewage systems without checking local regulations.
- Avoid inhaling chemical vapours.
- Refer to Material Safety data sheet (MSDS) of your local chemicals supplier.

• Wear protective



gloves and safety



goggles against

splashing of chemicals and when handling chemicals or replacing the filter bag.



Repair and troubleshooting:

Turn off the main switch before you carry out any intervention.



Only skilled/trained technicians can perform repairs and troubleshooting.



Spare parts:

Use only genuine spare parts to prevent malfunction of the unit.

### 3. User section

3.1 General: The PP filter unit is a plug and play device with easy to use key features.



 Start up:

Check if valves (#1, #2 and #3) are in vertical position, and valve #4 50% open (see picture).



Main switch on.

**Active** led will blink.

Press the start button and 1 second later Press the Gum fill button to repair Gum level in the Processor.

Wait until the blue led **Gum level** lid.

Press the start button again to activate the circulation pump in the Filter unit.

Pressure indicator will increase up to 0.2 bar or higher.

**Active** led will lid, the VCF-PP Filter unit is now active.

 Filter full status:

Pressure will rise up to 0.4 bar (+/- 0.05 bar)

Warning light will flash.

Turn of the main switch.

Replace filter and Carbon granulate ⇒ see chapter 3.3 changing the filter bag.

Start up the VCF-PP filter unit as follow

Main switch on.

**Active** led will blink.

Press the start button and 1 second later Press the Gum fill button to repair Gum level in the Processor. Wait until the blue led **Gum level** lid.

Press the start button again to activate the circulation pump in the Filter unit.

Pressure indicator will increase up to 0.2 bar or higher.

Active led will lid, the VCF-PP Filter unit is now active.

Main switch on.

**Active** led will blink.

Press the start button and 1 second later Press the Gum fill button to repair Gum level in the Processor. Wait until the blue led **Gum level** lid.

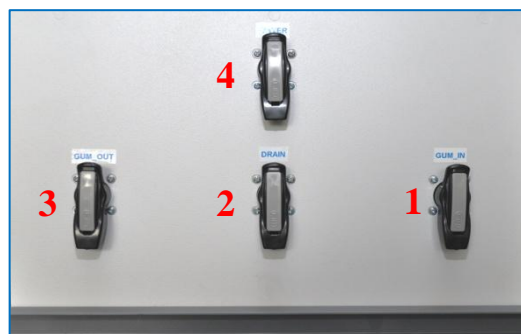
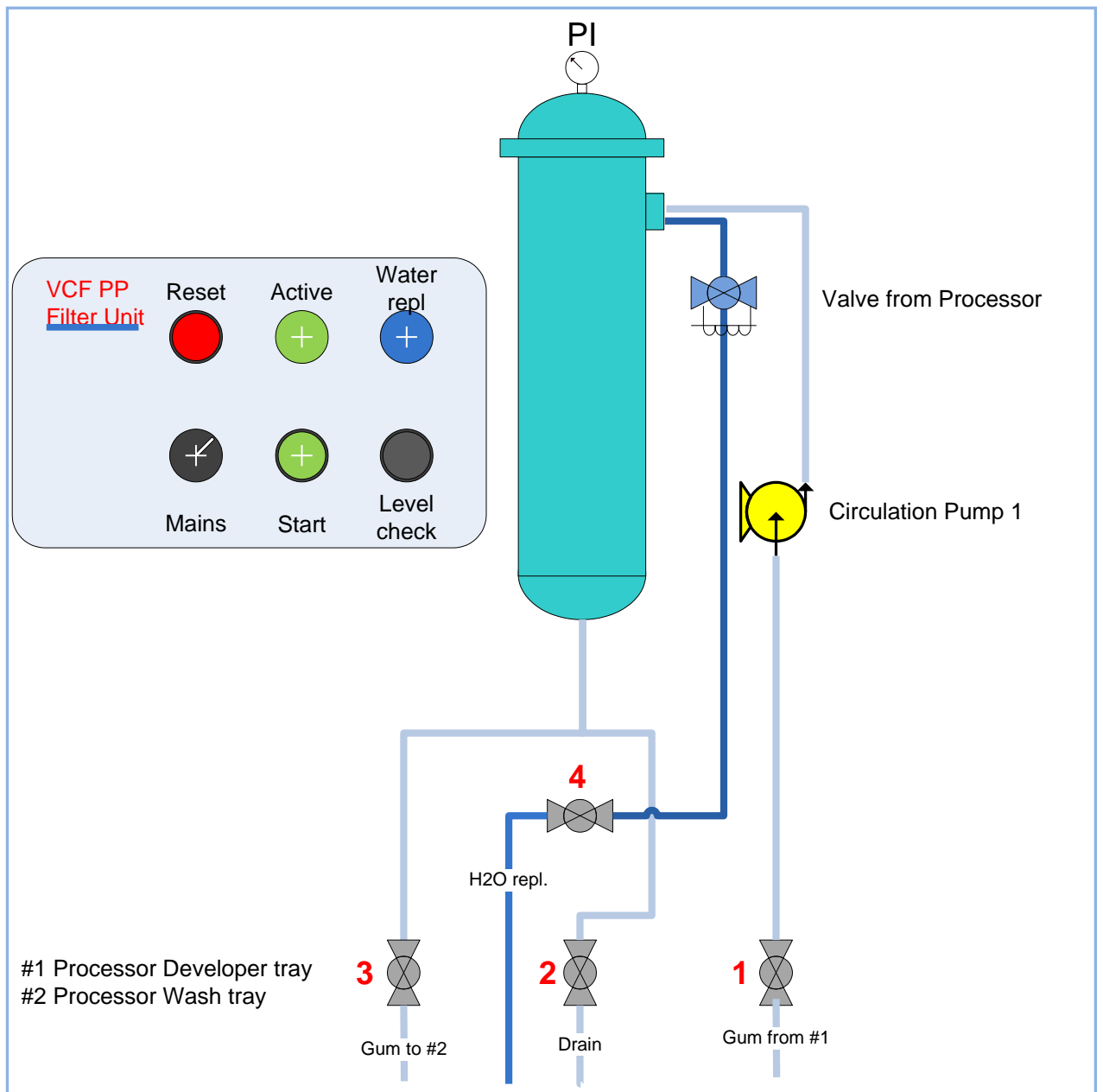
Press the **Reset** button to activate the circulation pump in the Filter unit.

Pressure indicator will increase up to 0.2 bar or higher.

Active led will lid, the VCF-PP Filter unit is now active.

The daily counter is put on zero.

3.2 Hydraulic scheme:



### 3.3 Changing the filter bag:



Switch off the filter unit

Close the inlet valve #1

Close the outlet valve #3

**Do not open the filter under pressure!**

Drain the liquid from the filter bag by opening the drain valve #2

Check the pressure indicator PI -> should be zero.

Remove the lid from the filter housing by turning counter clockwise (see figure 1)

A gentle tap against the handle may be necessary, if the lid was over tithed

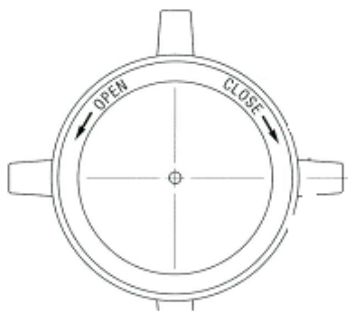
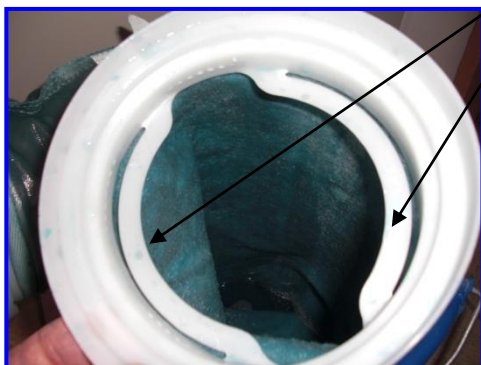


Fig 1

Remove the filter bag with caution via the bag handles



Shape the new filter bag, insert it into the filter-housing and position it manually.

Fill up the empty filter bag with Activated Carbon.

Check the position of the "O" ring from the lid.

Install the lid by turning clockwise (see figure 1) until it bottoms up, and both indicators are according figure 2

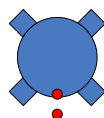


Fig 2

Close the drain valve #2

Open the inlet valve #1 and outlet valve #3

Start up the PP filter unit as described in the start up procedure





### 3.5 Maintenance mode:

Perform the maintenance instructions as described below when cleaning the Processor.

#### How to proceed?



Switch the unit off by means of the main switch.

Drain the VCF Gum in all sections from the Processor.

Open the drain valve #2

Open the filter lid.

Remove the filter bag.

Close the drain valve #2 when filter lid empty.

Fill up all sections from Processor and Filter unit manually with water.

Close the filter lid.

Power on the PP filter and start the circulation for 15 minutes



Repeat same procedure if necessary with clean water.



After maintenance procedure install new filter bag with Activated Carbon.

## 4. Spare parts

<u>Filter</u>	<u>code</u>
VCF-PP-Filter-Unit	VCF PP Filter Unit
Filter Bag 50 micron	RU+FB0050
Filter Bag 100 micron	RU+FB0100
Activated Carbon granular AA	RU+CA0020

## 5. Ordering parts info:

E mail: [ruja.automation@gmail.com](mailto:ruja.automation@gmail.com)

[www.ruja.be](http://www.ruja.be)