

User manual

S - PP - Filter - Unit



1. Technical specifications
2. Safety instructions
3. User section
4. Spare parts list
5. Ordering info

1. Technical specifications

DIMENSIONS	
Width	400 mm
Height	1100 mm
Depth	350mm
MECHANICAL SPECIFICATIONS	
Temperatures	
Developer Min. - Max.	20 - 50 °C
Aktivator Min. - Max.	20 - 50 °C
Water Min. - Max.	20 - 50 °C
Tank volumes (excl. Hoses to processor) Filter Unit	11 l
ELECTRICAL SPECIFICATIONS	
Power Supply EUR-models	2W + PE, 230V / 2x1 Amps, 50-60 Hz
Voltage tolerances	± 10%
Power consumption EUR models Max	200 Watts

APPROVALS	
CE regulations	
The S-PP-Filter-Unit complies with:	▪ Machine Directive 98/37/EG

WEIGHTS	
Filter Unit including Filter Bag	
▪ Shipping	60 kg
▪ Empty	40 kg
▪ With liquid	approx. 53 kg

2. Safety instructions

This chapter lists general safety prescriptions to be taken into account before you start operating the filter unit or perform maintenance and troubleshooting.



Handling instructions concerning chemicals:

- Do not drain chemicals into public sewage systems without checking local regulations.
- Avoid inhaling chemical vapours.
- Refer to Material Safety data sheet (MSDS) of your local chemicals supplier.

• Wear protective



gloves and safety



goggles against

splashing of chemicals and when handling chemicals or replacing the filter bag.



Repair and troubleshooting:

Turn off the main switch before you carry out any intervention.



Only skilled/trained technicians can perform repairs and troubleshooting.



Spare parts:

Use only genuine spare parts to prevent malfunction of the unit.

3. User section

3.1 General: The PP filter unit is a plug and play device with easy to use key features.




 Start up:

Check if all valves (1 to 4) are in vertical position (see picture)

Main switch on

Power on led will lid

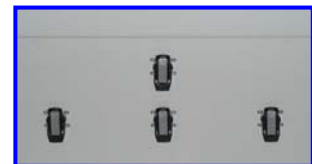
Both warning lights will lid and a sound warning signal  will be activated


Press the start button for a few seconds to activate the circulation pump

Pressure indicator will increase up to 0.2 bar

Release the start button

The PP Filter unit is now active



 Filter full status:

Pressure will rise up to 0.4 bar (+/- 0.05 bar)

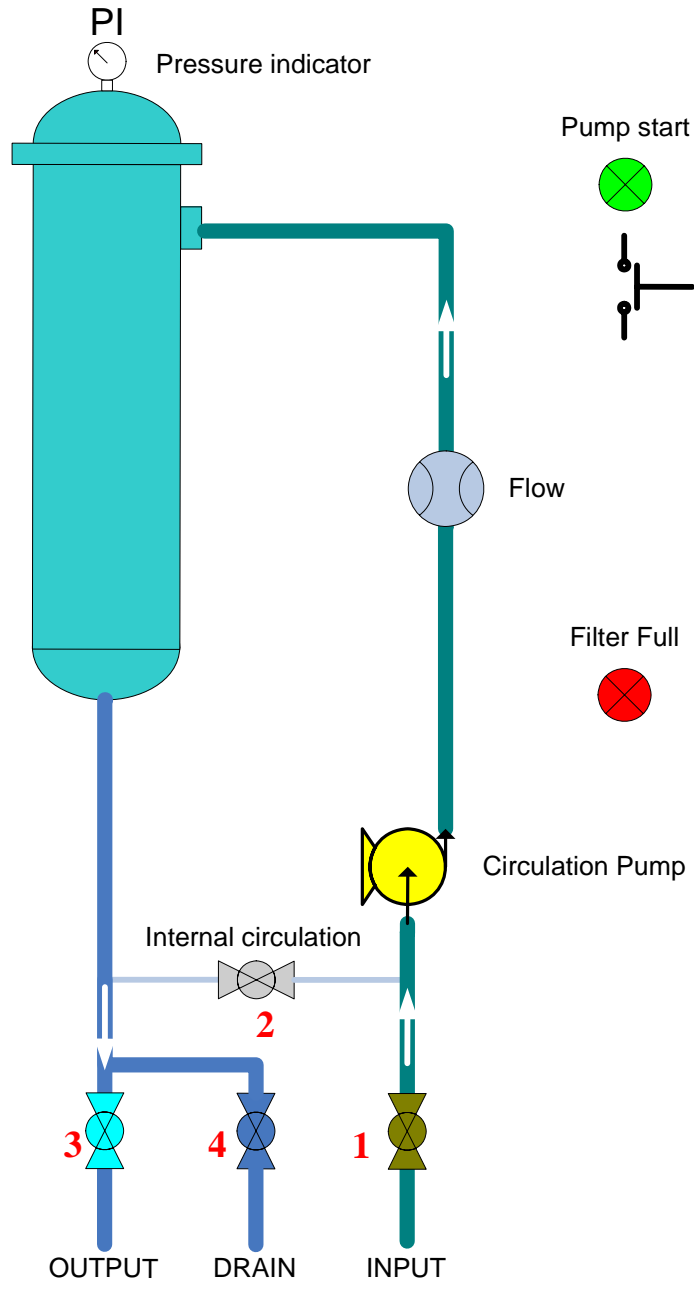
Both warning lights will lid and a sound warning signal  will be activated

Turn of the main switch

Replace filter => see chapter 3.3 changing the filter bag

Start up the PP filter unit as described in the start up procedure

3.2 Hydraulic scheme:



3.3 Changing the filter bag:



Switch off the filter unit

Close the inlet valve 1

Close the outlet valve 3

Drain the filter, via the drain valve 4

Check the pressure indicator PI -> should be zero.

Do not open the filter under pressure!

Remove the lid from the filterhousing by turning counterclockwise (see figure 1)

A gentle tap against the handle may be necessary, if the lid was overtightened

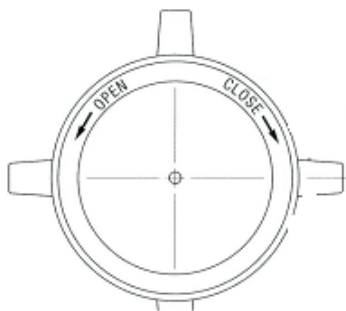
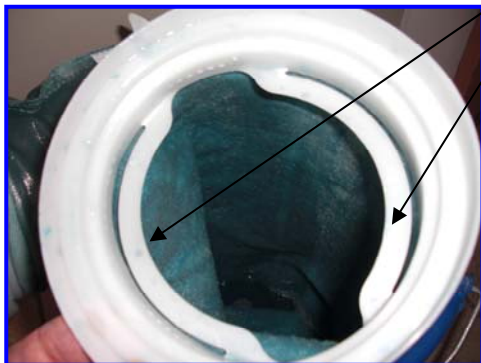


Fig 1

Remove the filter bag with caution via the bag handles



Shape the new filter bag, insert it into the filter-housing and position it manually

Check the position of the o ring

Install the lid by turning clockwise (see figure 1) until it bottoms up, and both indicators are according figure 2

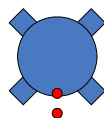


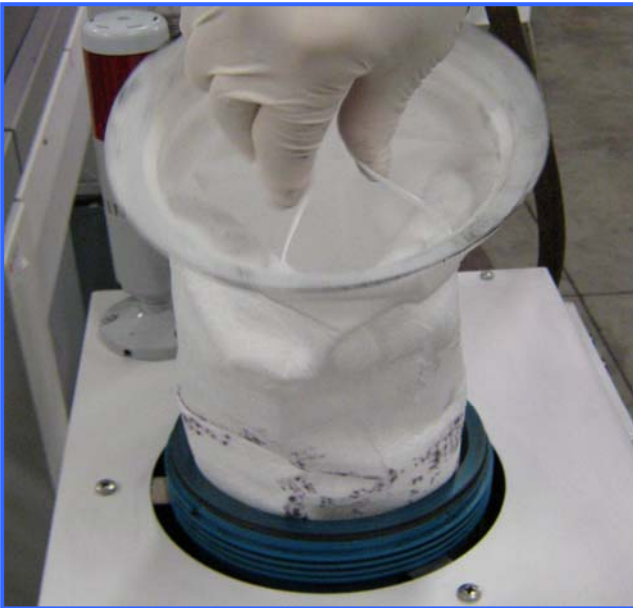
Fig 2

Close the drain valve 4

Open the inlet valve 1 and outlet valve 3

Start up the PP filter unit as described in the start up procedure

3.4 Silver recovery with Lithostar:



3.5 Maintenance mode:

Perform the maintenance instructions as described below, each 3 months.

How to proceed?



Switch the unit off by means of the main switch

Close the outlet valve **3** and inlet valve **1**

Open the drain valve **4**

Open the filter lid

Remove the filter bag

Close the drain valve **4** when filter lid empty.

- **Thermal & photopolymer** -> Fill up manually with Altec T236* and water
or

- **Lithostar** -> Fill up manually with water

Open the rinsing valve **2**

Close the filter lid

Power on the PP filter for 5 minutes



Perform the same procedure with water.



The PP filter maintenance is now executed.

* The cleaner Altec T236 can be ordered from your local Agfa dealer

4. Spare parts

<u>Filter</u>	<u>code</u>
S-PP-Filter-Unit	S PP Filter Unit
Filter Bag 5 micron	RU+FB0005
Filter Bag 10 micron	RU+FB0010
Filter Bag 25 micron	RU+FB0025

6. Ordering parts info:

E mail: ruja.automation@gmail.com

or

Fax: +32 3 290 00 85