

How to connect a D-R-PP-Filter-Unit with a Haase VSLxx

1- Contents:

- 15 x Clamp
- 4 x Valve
- 5 x Connection nipple



1 x Connection piece IN Dev tray



Connection piece OUT Dev tray

- 10m Hose dia 20 mm
- 4x Wheels



1 x Connection piece OUT Wash tray



Connection piece IN Wash tray

2- Tools needed:

- Screw driver
- Knife
- Drilling machine
- Drill dia 26 mm
- PVC glue (Tangit) & Teflon

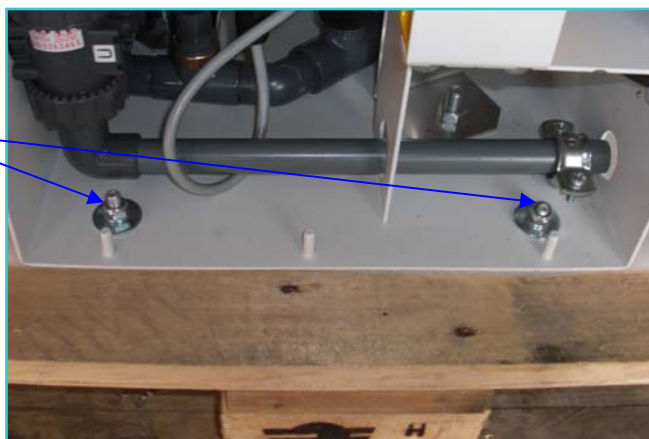
3- Unpacking:

3.1 Content:



3.1 Preparation:

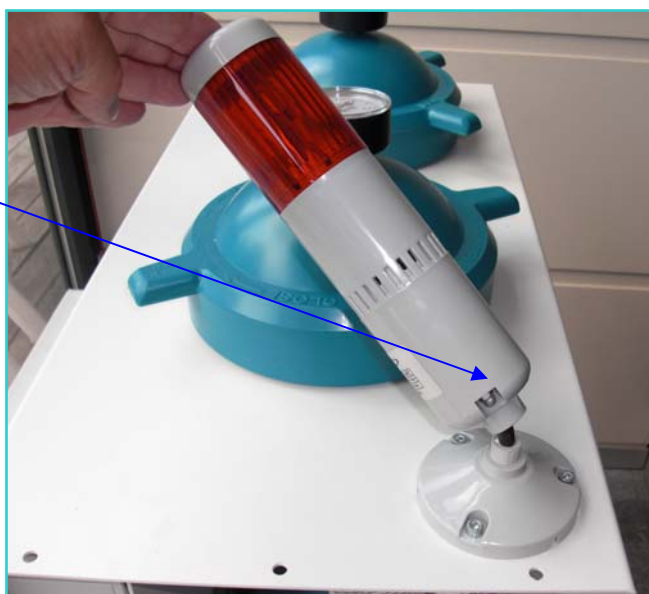
Unscrew the 4 fixation bolts



Install the 4 wheels.



In case of external buzzer,
install the Tower light into
the vertical position.



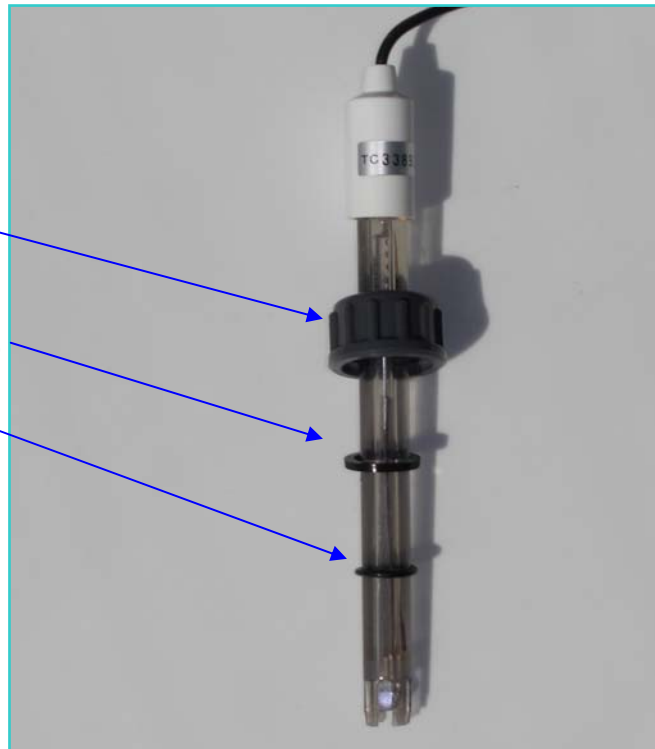
Remove the pH probe from the circulation tube.

Unpack the probe, take care of "O" rings and fluid container.

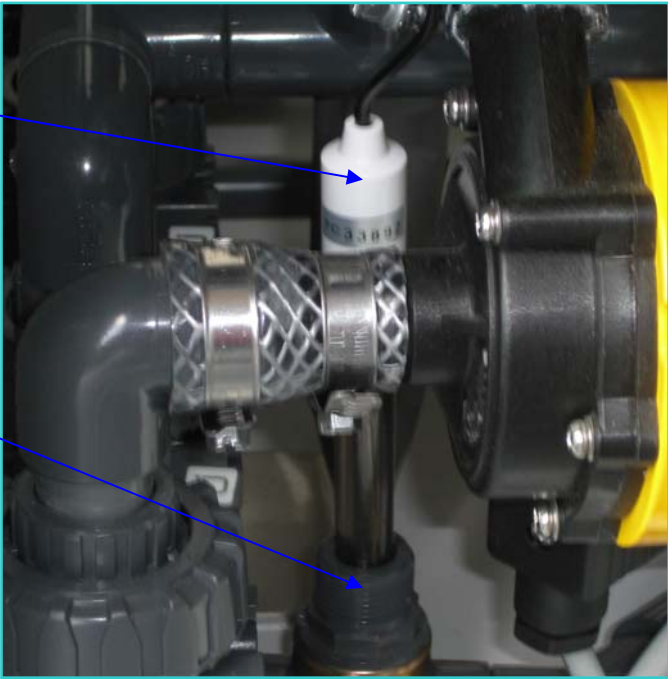


Remove the fluid container and put the PVC plug into position.

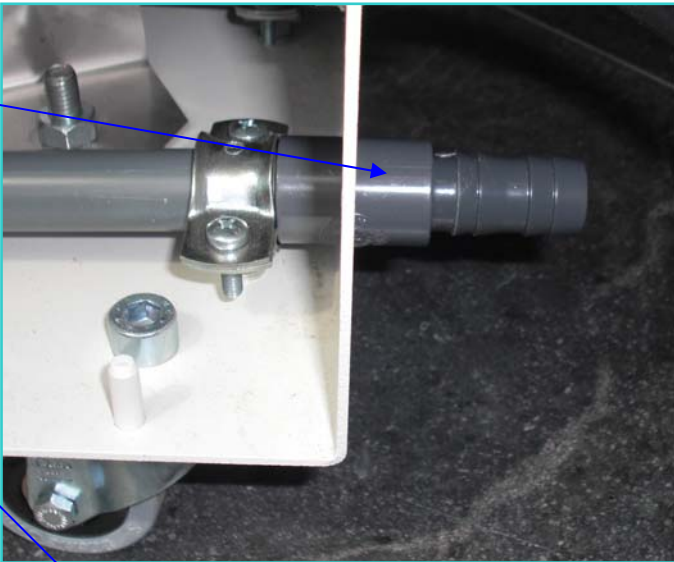
Slide the 2 "O" rings (first the large and than the smaller one).



Install the pH probe in the lower section of the Filtration Unit. This PVC "T" part is in the return flow direction of the Water Filter.

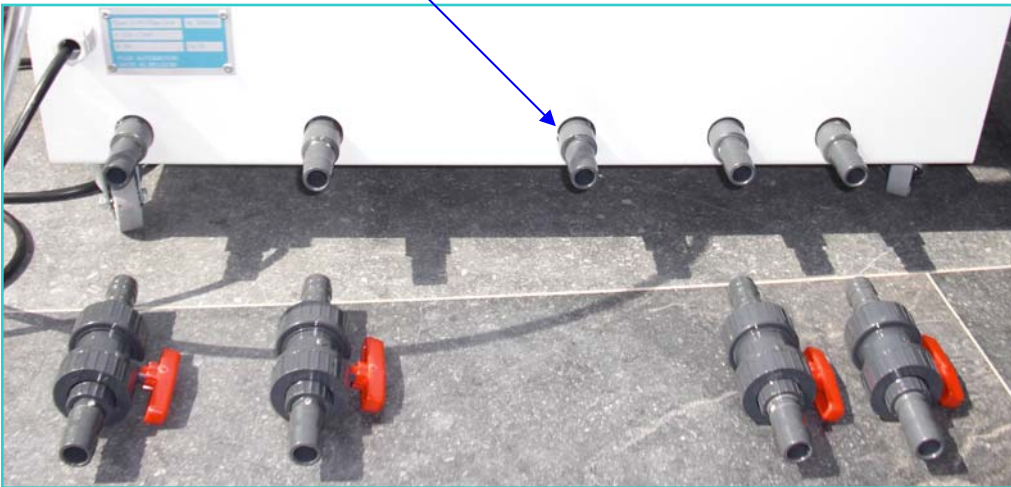


Carefully tighten the PVC plug to prevent leakages.



Glue the 5 PVC pipe connection nipples.

Use "Tangit" PVC glue to fix The "5" nipples.



3.2 Connection:

Prepare the hoses and valves

Length of the hoses = 250 mm

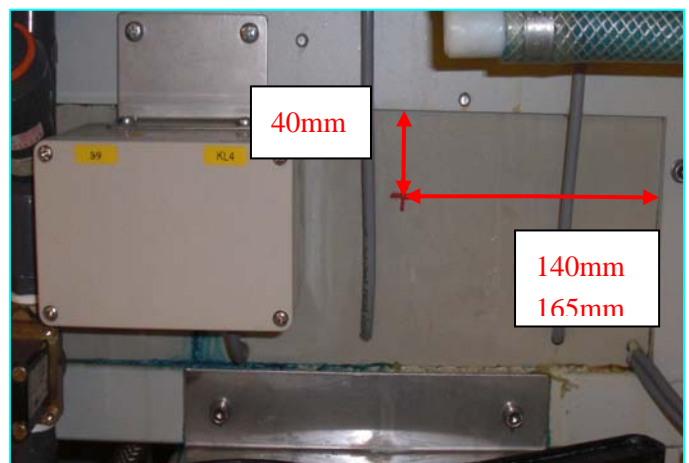
! Do not yet connect them to the filter unit



Drill a hole dia 26 mm thru the wall of the VSL Dev tank (left side).

Position 40 mm below the metal frame and 140 mm left of the metal frame.

Remove the burrs on the drilled hole



Drill a hole dia 26 mm thru the wall of the VSL Dev tank (bottom part).

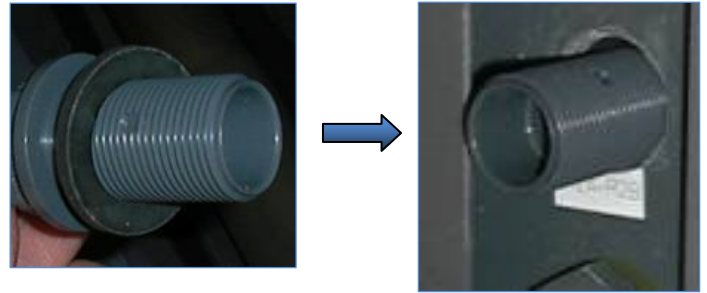
Position 120 mm left from the drain hole.

Remove the burrs on the drilled hole

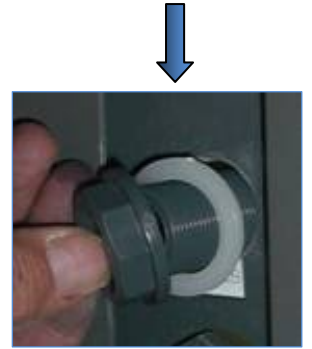


Put the rubber sealing on the washtank connection piece

Mount the connection piece into the wash tank, rubber sealing inner side

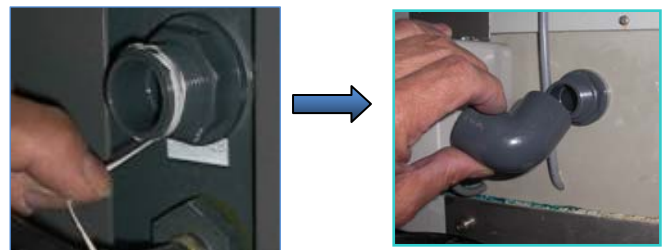


Screw the nut on the connection piece, reinforcement ring against the Dev tank wall



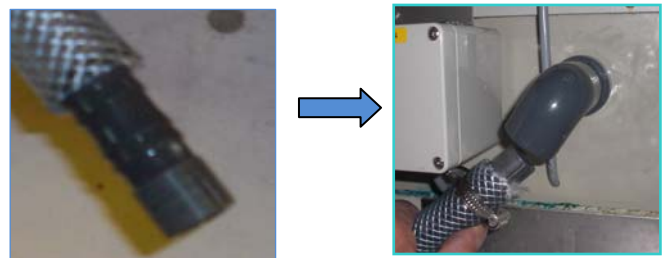
Put Teflon on the threaded part

Screw the elbow onto the connection, angle of 45° towards the developer section



Install the nipple on the hose

Glue the PVC nipple into the elbow



Screw the connection piece in the bottom part of the Dev tank
Use the Teflon to ensure a "leak proof" connection

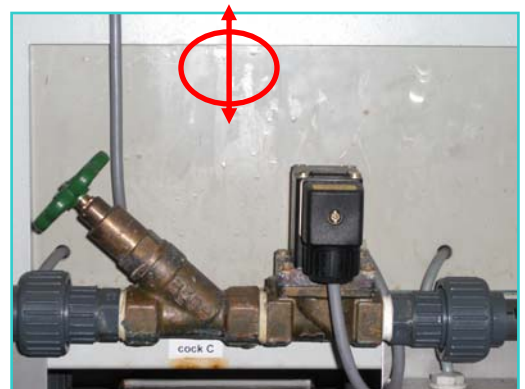


On the inside of the wash tank
position the elbow 45° towards the center of the
Dev section

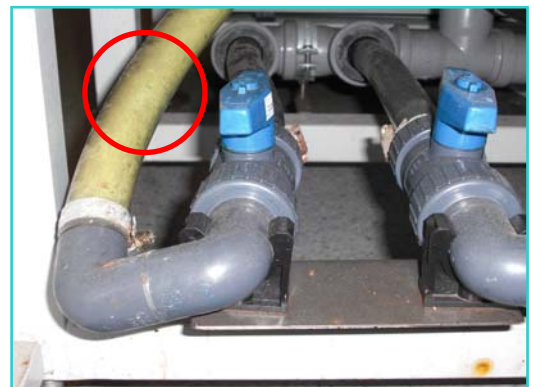


Drill a hole dia 26 mm thru the wall of the
VSL Wash tray (left side).

Position 40 mm below the metal frame and
In the center of the Wash tray.
Check for the optimal position.
Remove the burrs on the drilled hole

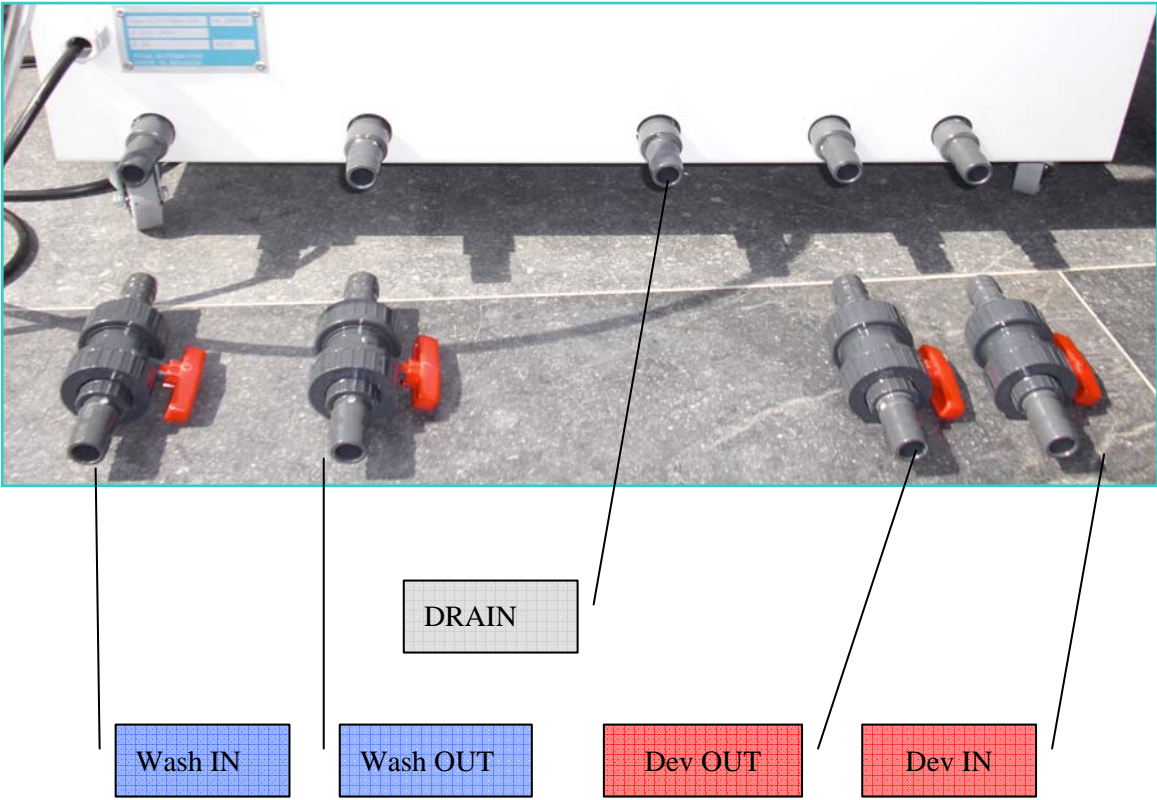


There are two options for the OUT connection
of the Wash tray. A hole in the bottom center
of the tray or a "T" PVC connection piece in the Drain
connection tube.



Connect the hoses with valves to the filter unit.
There are 4 valves IN -OUT Dev section
and IN-OUT Wash section.

The Drain has no extra valve.



4. Finalization:

Clean the Dev & Wash tank and make sure that all PVC particles are removed
Re-install the rollers, brushes and guide plates.

Connect the Filter Unit to the socket in the electrical compartment of the Processor.



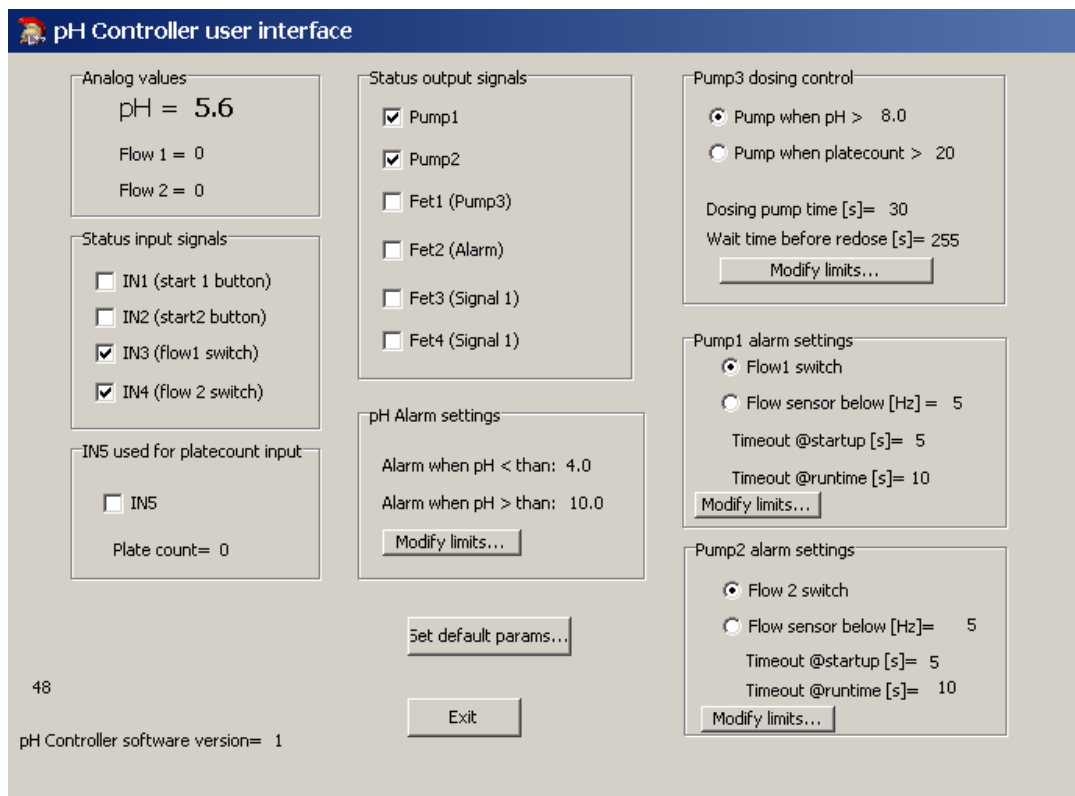
The modification is now finished, for start up refer to the user manual.

5. Software Installation:

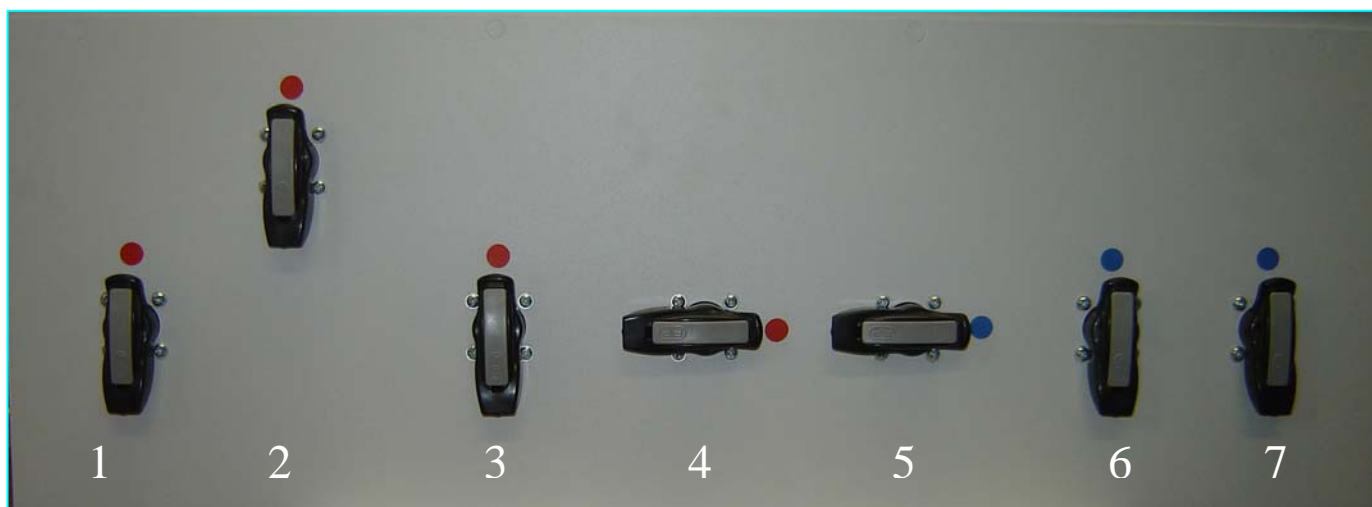
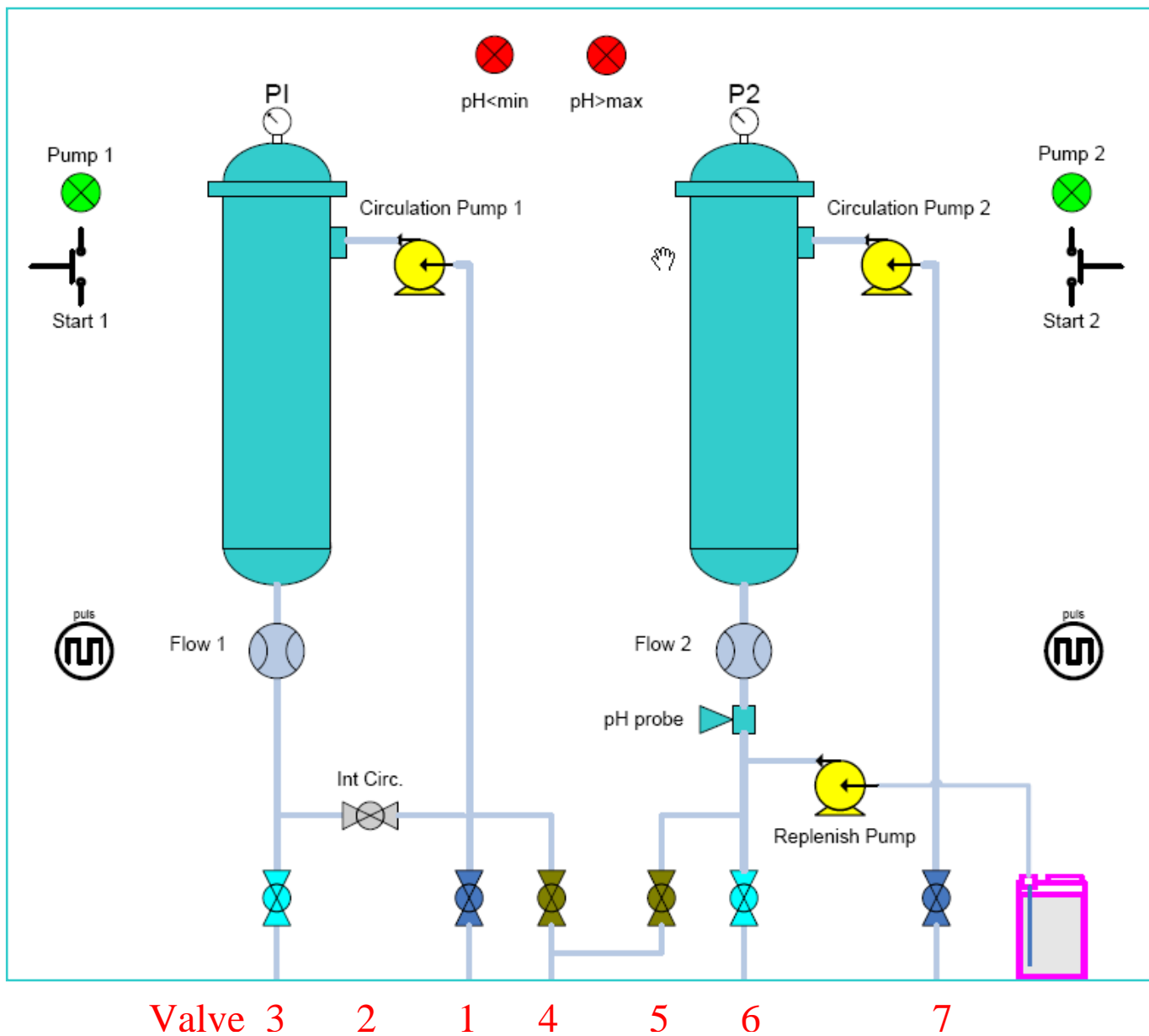
Copy the software file “pHController.exe” on your PC.

- Run this file and follow on screen instructions.
- It will install the necessary drivers and firmware on your PC.
- Connect your PC with a USB cable to the Filter Unit and power up the system.
- Run the “pHController_proj.exe” file the actual firmware to control and update all parameters in the Filter Unit.

Screen dump



6. Filter flow diagram:



7. Electrical Diagram:

